



Budenberg

Made in Britain

4, Gilchrist Road, Northbank Industrial Park, Irlam, Manchester, UK. M44 5AY.

Tel : +44 (0)161 777 7300

Email : sales@budenberg.co.uk

Fax : +44 (0)161 777 7399

Web : www.budenberg.co.uk

Model: 966TGP

Model 966TGP Industrial service gauge is manufactured with a special DMC (Dough Moulding Compound) safety case and stainless steel wetted parts.

With the DMC's high impact strength, it complies with OCMA (Oil Companies Materials Ass'n) specification for pressure gauges, and can be used for applications anywhere in the world, offshore, desert and chemical plants for example. All Budenberg DMC cases are full Safety Pattern, and are suitable for compatible gases and liquids at high pressures.

This is a prime example of a low maintenance pressure gauge for the most arduous application, and can be fitted to our complete range of diaphragm seals.

Sizes

100mm (4") & 150 mm (6")

Mounting

Direct, Surface (with Spacing Pillars)

Case & Bezel

DMC (Dough Moulding Compound) is a glass-reinforced polyester with central partition and blow out back. It has extremely high impact strength, is self-extinguishing and is stable at 160°C and down to arctic temperatures. Flush mounting models have a clamp ring that goes around the body to hold the gauge in the panel

Scale Ranges

0 to 400 mBar up to 0 to 1400 Bar in equivalent units of pressure, vacuum or compound ranges.

Dual Scale units or custom scales can be provided

Pressure Element

≤ 80 Bar – 316 Stainless Steel Tube

≥ 80 Bar – 316 Stainless Steel Coil

Overload

≤ 100 Bar - Maximum pressure 125% of the Range

≥ 100 Bar – Maximum pressure 125% of the Range

Option: Up to 3x maximum scale, fitted with overload stops

Pressure Connection

1/4", 3/8" 1/2" BSP

1/4", 3/8", 1/2" NPT (API)

Other connections available, contact our Sales Office

Electrical Contacts

Available with single, double contacts

Accuracy Class

1.0% of FSD as defined in EN837-1

BOURDON TUBE PRESSURE GAUGE DMC CASED SAFETY PATTERN



Dial

White anodised Aluminium with black scales

Option: Dual scales or special dial markings are available

Pointer

Black anodised aluminium

Options: Micrometer Adjustable, Knife-edge, Max-Min Pointers

Movement

Stainless Steel Construction

Options: Viscous Damped Movement to Overcome the Effects of Vibration and Minor Pressure Pulsations

Window

Laminated glass, optional Acrylic window

Environmental Rating

Direct / Surface - IP67 as defined in EN 60 529

Flush Mounting – IP65 as Defined in EN 60 529

Temperature

Operating: -20 to +90 Degrees C

Storage: -40 up to + 100 Degrees C

Options: for lower or higher operating temperatures, please contact our Sales Office

Traceability

All instruments are individually calibrated and have an unique Serial Number printed on the dial. A Certificate of conformity traceable to National Standards is supplied free of charge.

Certification available

BS EN 10204 3.1B Material Certification

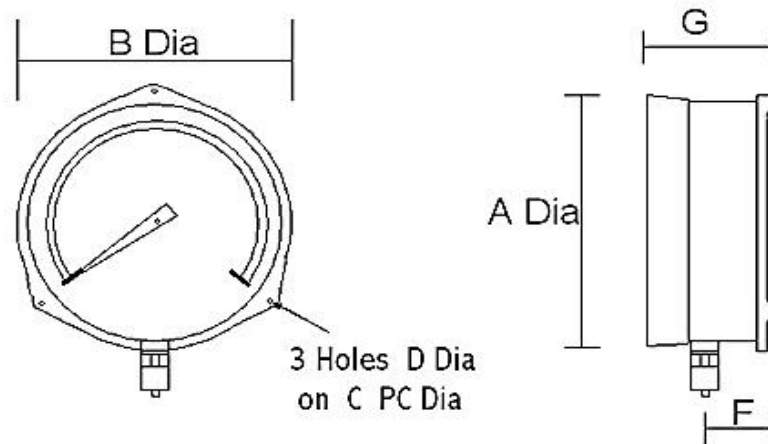
Point by point Calibration Certificate

Safety

All units are manufactured to comply with EN 837-1 and other regulatory standards including P.E.D.

Installation Instructions

Refer to EN 837-2



Surface / Direct Mounting 966TGP

Model No	Size	A	B	C	D	F	G	Weight
966TGP	100mm	112mm	120mm	115mm	5mm	25mm	65mm	0.7Kg
966TGP	150mm	165mm	170mm	165mm	5mm	30mm	65mm	0.9Kg

Accessories.

Electric Contacts.

Model 144 Magnetically assisted contacts can be fitted as Single, Double units – See Datasheet on Electric Contacts.
 Model 134 Reed Switch contacts can be fitted as Single or Double units – See Datasheet on Electric Contacts.
 Model 135 Attachable Reed Switch contacts can be fitted as Single or Double units – See Datasheet on Electric Contacts.

Valves.

We can supply Needle, Ball or 2 Valve manifolds for the Model 966TGP – See separate Datasheet.
 The manifolds in addition to allowing the instrument to operate normally allows the following: -

- a). Checking of gauge zero at line pressure.
- b). Complete isolation of the instrument.
- c). De-pressurisation of the instrument or controlled purging.
- d). Damping of pressure pulsations and surges.

Diaphragm Seals.

The Model 966TGP type instruments may be fitted with direct mounting and distance reading diaphragm seals and capillaries, this allows use on hot viscous fluids, slurries and highly corrosive mediums. The maximum recommended lengths of capillary is 50 Metres.

Application

The 966TGP has been in service as general service pressure gauges and fitted to diaphragm seals on Chlorine plants all over the world for over half a century.